

Biesheuvel Autosport
Installation Number

30431

SAFETY CAGE SPECIFICATION

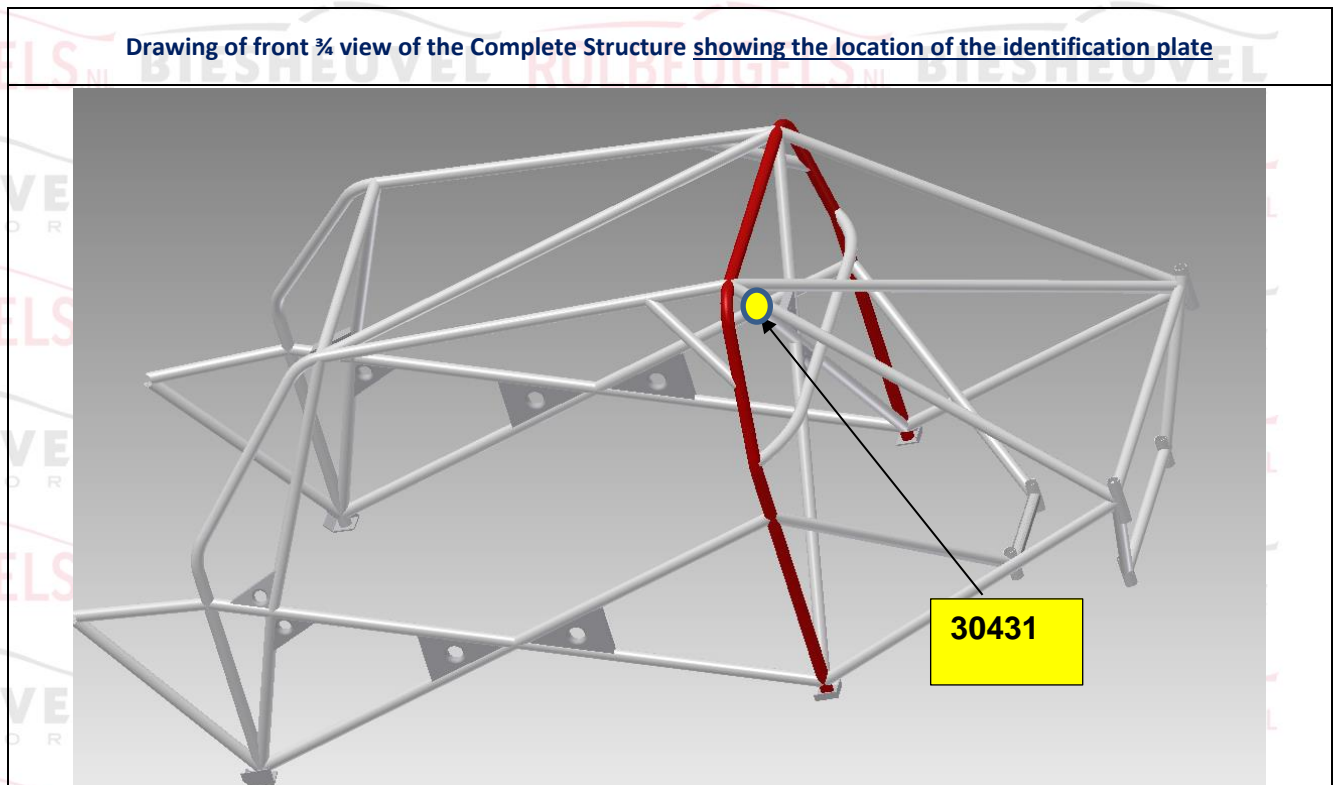
Biesheuvel Autosport is a  certified company for installations off roll-bars
This roll bar is built in under Annexe J artikel 253 self construction

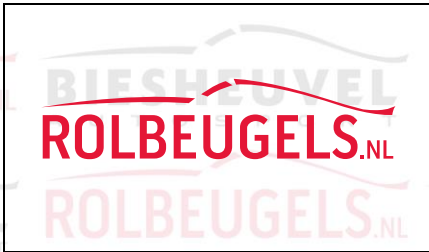
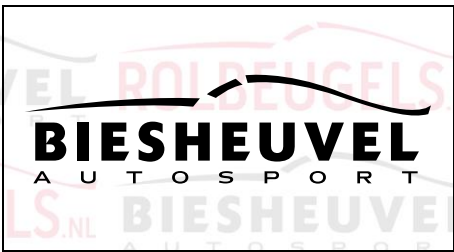
| | |
|--------------------------|--|
| Safety Cage Manufacturer | Biesheuvel Autosport |
| Address | Rijksweg 37 4255 GE Nieuwendijk Netherlands |
| Phone n° + Email | 0031 183 403400 info@biesheuvel.nl |

The structure shown on this form is manufactured for the following vehicle:

| | | | | | |
|---|------------|------------|-------------|-----------------------|-------------|
| Make | BMW | Model | E 46 | Year/Model Identifier | 2002 |
| Vehicle Homologation Number(s)* *if applicable | | N/A | | | |

Drawing of front $\frac{3}{4}$ view of the Complete Structure showing the location of the identification plate

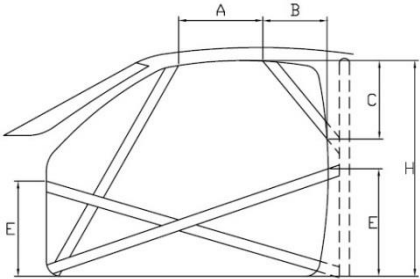




Biesheuvvel Autosport
Installation Number

30431

DETAILS OF STRUCTURE

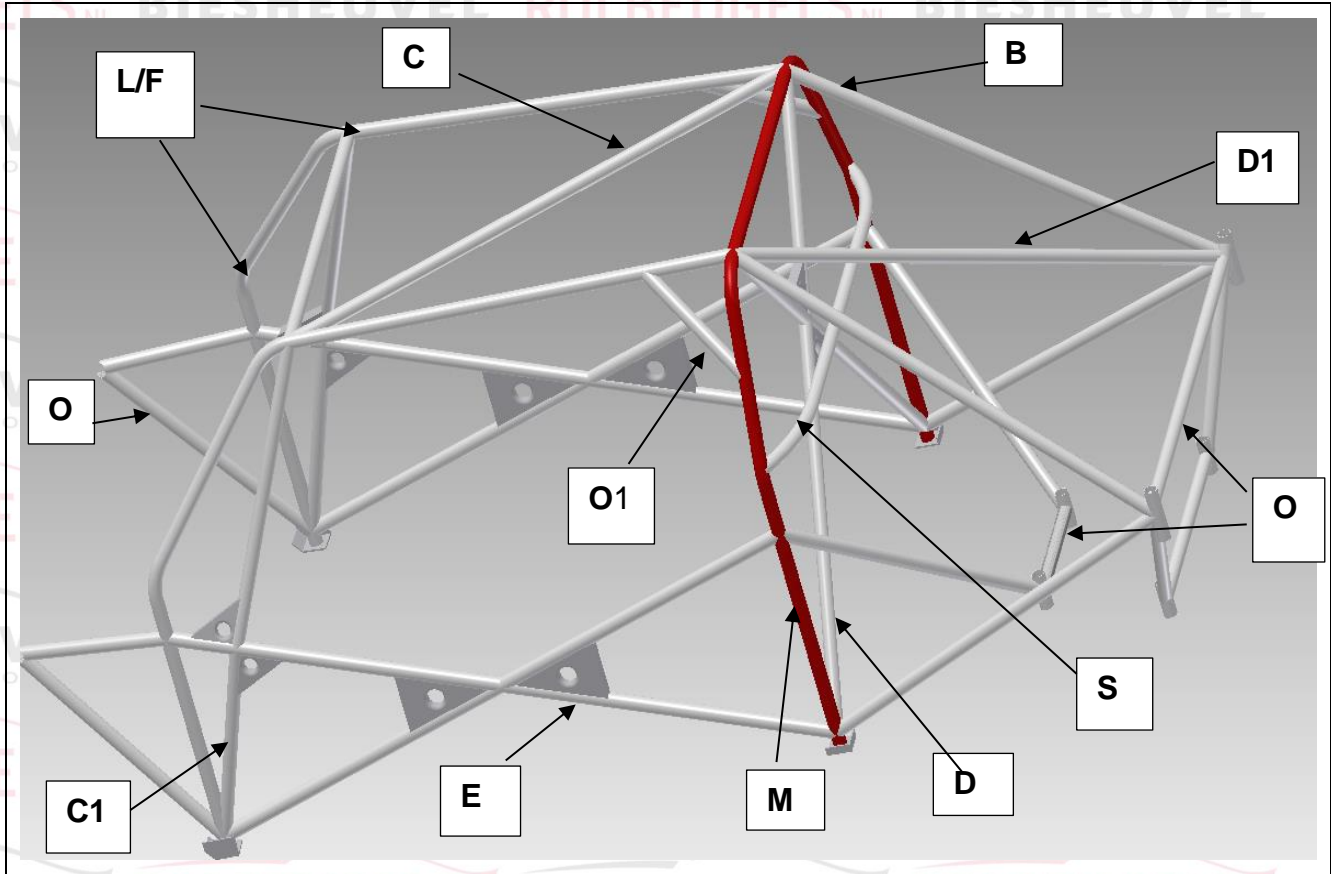


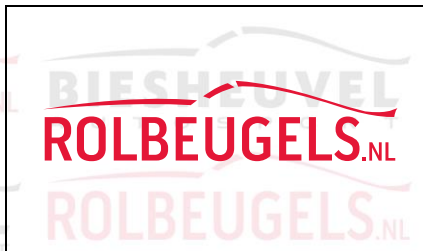
A = 420 mm B = 230 mm
 C = 200 mm E = 250 mm
 H = 910 mm (E is highest figure only)

All Dimensions ± 5mm

| | |
|--|---------------|
| Method of attachment to Body Shell | <u>Welded</u> |
| Weight of Safety Cage, inc. fastenings | <u>20</u> kg |

LABELLED DRAWING OF THE SAFETY CAGE STRUCTURE SHOWING ALL TUBING DIMENSIONS





Biesheuvel Autosport
Installation Number

30431

| All Dimensions $\pm 0.1\text{mm}$ | | Show location of each type on drawing | | | |
|--------------------------------------|------------|---------------------------------------|------------------------|---------------------|-----------------------|
| Tube / Member | Label | Grade of Steel | External Diameter (OD) | Wall Thickness | Min. Tensile Strength |
| Main Rollbar | <u>M</u> | <u>E235EN/10305-1</u> | 45.0 mm | 2.5 Mm | 480 N/mm ² |
| Front/Lateral Rollbar | <u>L/F</u> | <u>E235EN/10305-1</u> | 40.0 mm | 2.0 Mm | 480 N/mm ² |
| Backstays | <u>B</u> | <u>E235EN/10305-1</u> | 40.0 mm | 2.0 Mm | 480 N/mm ² |
| Main rollbar Diagonal members | <u>D</u> | <u>E235EN/10305-1</u> | 40.0 mm | 2.0 Mm | 480 N/mm ² |
| Backstay Diagonal members | <u>D1</u> | <u>E235EN/10305-1</u> | 40.0 mm | 2.0 Mm | 480 N/mm ² |
| Roof Reinforcements | <u>C</u> | <u>E235EN/10305-1</u> | 40.0 mm | 2.0 Mm | 480 N/mm ² |
| Doorbars | <u>E</u> | <u>E235EN/10305-1</u> | 40.0 mm | 2.0 Mm | 480 N/mm ² |
| Windscreen Pillar Reinforcements | <u>C1</u> | <u>E235EN/10305-1</u> | 40.0 mm | 2.0 Mm | 480 N/mm ² |
| Harness Bar | <u>S</u> | <u>E235EN/10305-1</u> | 40.0 mm | 2.0 Mm | 480 N/mm ² |
| OPTINAL TUBES | <u>O</u> | <u>E235EN/10305-1</u> | 40.0 mm | 2.0 Mm | 480 N/mm ² |
| OPTINAL TUBES | <u>O1</u> | <u>DIN2391 25CRM04</u> | 30.0 mm | 1.5 Mm | 700 N/mm ² |
| | | | mm | Mm | N/mm ² |
| | | | mm | Mm | N/mm ² |
| | | | mm | mm | N/mm ² |
| | | | mm | mm | N/mm ² |
| Total length of all tubes < 40 mm OD | | | mm | 15 m maximum | |

PHOTO 1
FRONT ¾ VIEW OF CAGE



PHOTO 2
REAR ¾ VIEW OF CAGE



PHOTO 3
VIEW FROM SIDE OF CAR



PHOTO 4
MAIN ROLLBAR TO FLOOR ATTACHMENT



PHOTO 5
REAR BACKSTAY TO BODYSHELL ATTACHMENT



PHOTO 6
FRONT ROLLBAR TO FLOOR ATTACHMENT



PHOTO 7
FRONT ROLLBAR TO "A" PILLAR ATTACHMENT



PHOTO 8
MAIN ROLLBAR TO "B" PILLAR ATTACHMENT



PHOTO 9
ATTACHMENT TO FRONT SUSPENSION

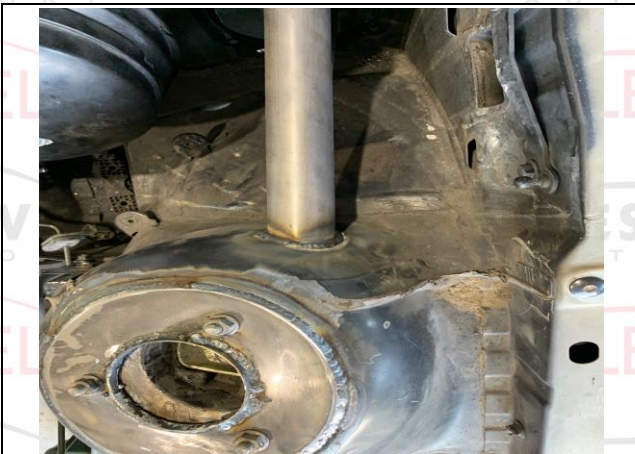


PHOTO
Chassis Identification Number

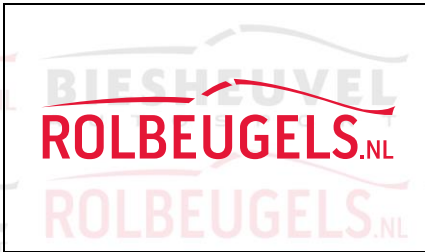
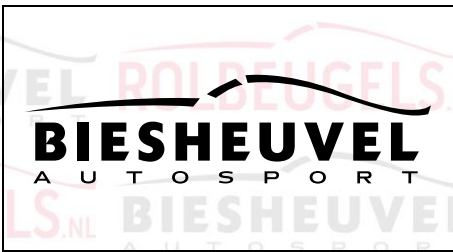


PHOTO 10
ANTI-INTRUSION DOORBAR - DRIVER



PHOTO 11
ANTI-INTRUSION DOORBAR - CO-DRIVER





Biesheuvél Autosport
Installation Number

30431

PHOTO 12
SHOULDER HARNESS ATTACHMENT - DRIVER



PHOTO 13
SHOULDER HARNESS ATTACHMENT - CO DRIVER



PHOTO 14
LOCATION OF IDENTIFICATION PLATE



PHOTO 16
DETAILS OF IDENTIFICATION PLATE



PHOTO 17
OTHER DETAILS OF CAGE

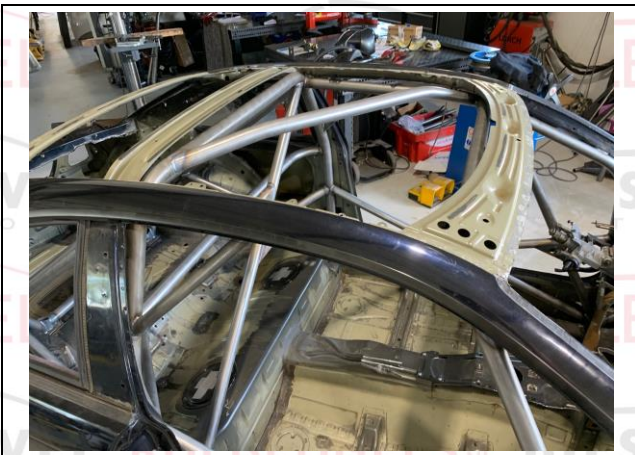
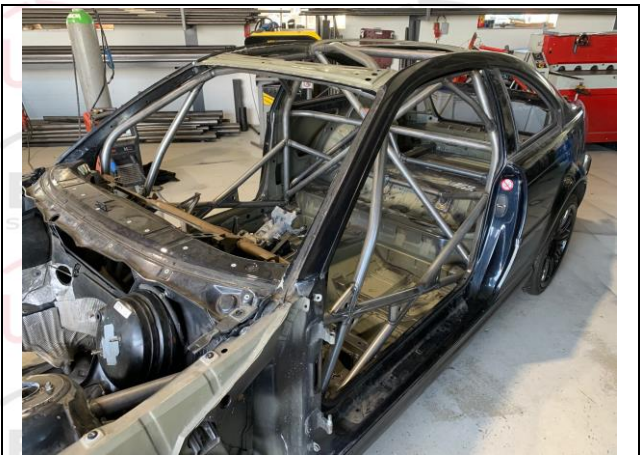
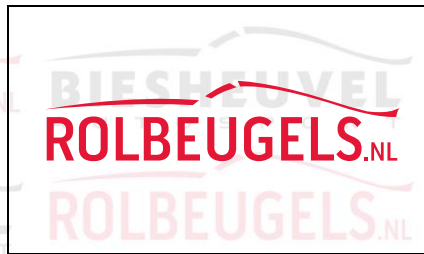
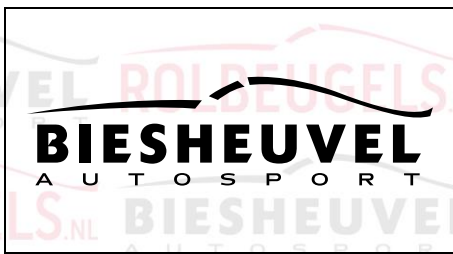


PHOTO 18
OTHER DETAILS OF CAGE





Biesheuvel Autosport
Installation Number

30431

| | |
|---|--------------------------|
| V.I.N. or Chassis Identification Number | <u>WBSBL92080JR01623</u> |
| Safety cage identification Number | <u>30431</u> |

MANUFACTURER'S DECLARATION AND DETAILS:

I declare that the Safety Cage Structure described on this form and fitted to the vehicle described above:

- was constructed and installed in accordance with the specifications and design shown herein.
- has been manufactured so that all aspects of the Safety Cage design, including configuration and strength requirements and welded and demountable joints and mountings, will be in conformity with the requirements of the FIA Homologation Regulations for Safety Cages.
- has been identified by an engraved plate bearing the name or logo of the manufacturer, (Biesheuvel Autosport)

| | |
|---------------------|---|
| Manufacturer's Name | <u>Biesheuvel Autosport</u> |
| Address | <u>Rijksweg 37</u> <u>4255 GE Nieuwendijk</u> <u>Netherlands</u> |
| Phone n° + Email | <u>0031 183 403400</u> <u>info@biesheuvel.nl</u> |
| Signature: | Insert signature here |
| Name of Signatory#: | <u>N Biesheuvel</u> |

Insert
Manufacturer Stamp
here

MANUFACTURER'S AGENT: (For Safety Cages installed by an Agent)

The following Agent is authorised to act on the manufacturer's behalf to install this Safety Cage design.

| | |
|------------------|--|
| Agent's Name | <u>GB Metaal Techniek</u> |
| Address | <u>Bredesteeg 2</u> <u>4255 GH Nieuwendijk</u> <u>Netherlands</u> |
| Phone n° + Email | <u>0031 622607952</u> <u>info@rolbeugels.nl</u> |

Instructions to the installer of the Safety Cage

Empty box for instructions to the installer of the Safety Cage.

